

Women and Children First

Improving maternal and newborn health in Nkhotakota District, Malawi



Communities supported
268
Lives saved
91
Women, children and adolescents benefiting
29,340

Problem

At the time of the project Malawi had a newborn mortality rate of 22 / 1000 live births and a maternal mortality rate of 510 / 100,000 live births.

Approach

WCF MNH tool

- 268 groups established with 11,160 members
- Developed local answers including: health education via wall messages and community campaigns, income generation for crisis and transport funds and vegetable growing and distribution.

Quality improvement (QI)

- 20 QI teams formed at all maternity facilities - designing and running projects to improve service quality

Advocacy

- Groups and project staff routinely shared evidence from the project and lobbied with key decision-makers

Results

- Large improvements in women's knowledge of two or more danger signs in pregnancy, delivery and after birth (increases of 29%, 35% and 44% respectively)
- Improvements in care-seeking: attending 4 or more antenatal care appointments (increase of 10%), delivery with a skilled attendant (14%) and seeking postnatal care within 2 days (13%)

- For home deliveries large improvements in safe newborn care: 73% of babies put to breast within one hour of delivery (54% at baseline)
- Large improvements in service quality: adherence to neonatal sepsis (increase of 75%), post-partum hemorrhage (83%) and partograph protocols (42%) and maternal and neonatal case fatality rates.

Lessons learned

- Groups improved knowledge relating to pregnancy, delivery and neonatal care
 - Groups stimulated community action on MNH care and care seeking behaviours
 - Inadequate resources allocated to ensure sustainability through government systems
- www.womenandchildrenfirst.org.uk

Partner

MaiKhanda Trust

Funder

Big Lottery Fund (£499,681)

Dates

2015 – 2018

Project population

147,737

Nkhotakota District, Malawi



Figure 1: Knowledge of danger signs

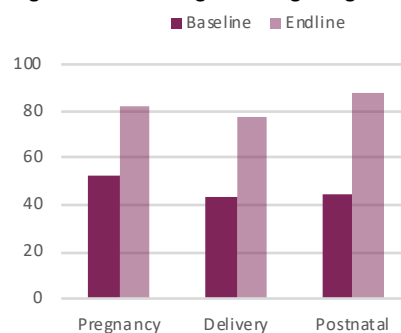


Figure 2: Care-seeking practices

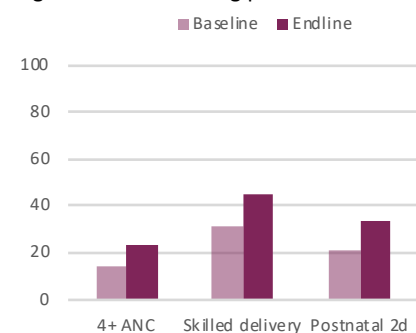
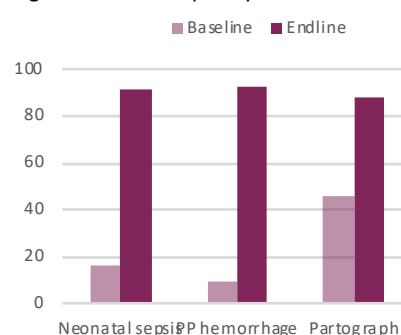


Figure 3: Service quality



Male community member

"So the number of deliveries on the way to the maternity has drastically been reduced. Sometimes women could die on their way to the maternity – both the woman and the baby. We cannot necessarily say that we will not die, death is natural. Some die when they are young, some die while in the womb of their mothers. But these days, the death rate has decreased".